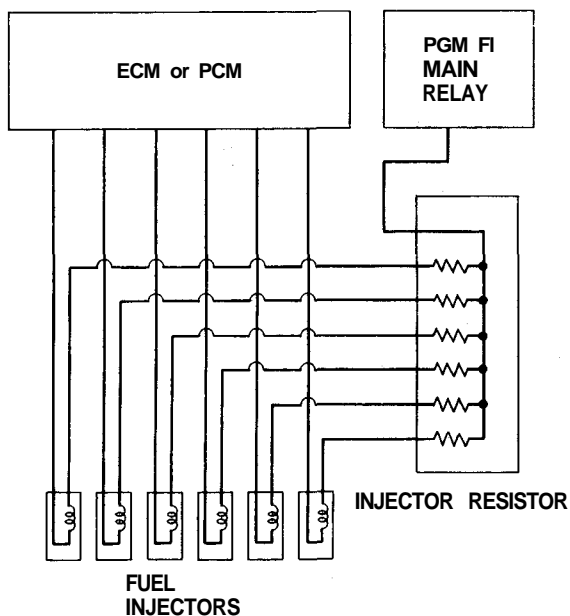




## Injector Resistor

### Description

The injector resistor lowers the current supplied to the fuel injectors to prevent damage to the fuel injector coils. This allows a faster response time of the fuel injectors.

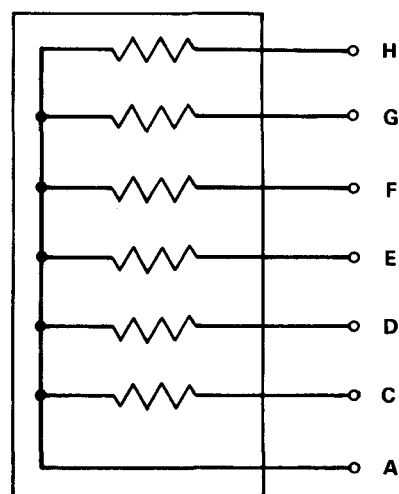
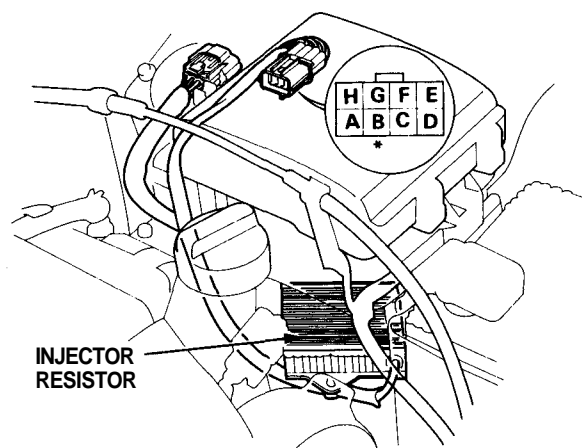


### Testing

1. Disconnect the injector resistor connector.
2. Check for resistance between each of the injector resistor terminals (C, D, E, F, G and H) and the power terminal.

Resistance should be: 5–7  $\Omega$

\*: NOT USED



- Replace the injector resistor with a new one if any of the resistances are outside of the specification.